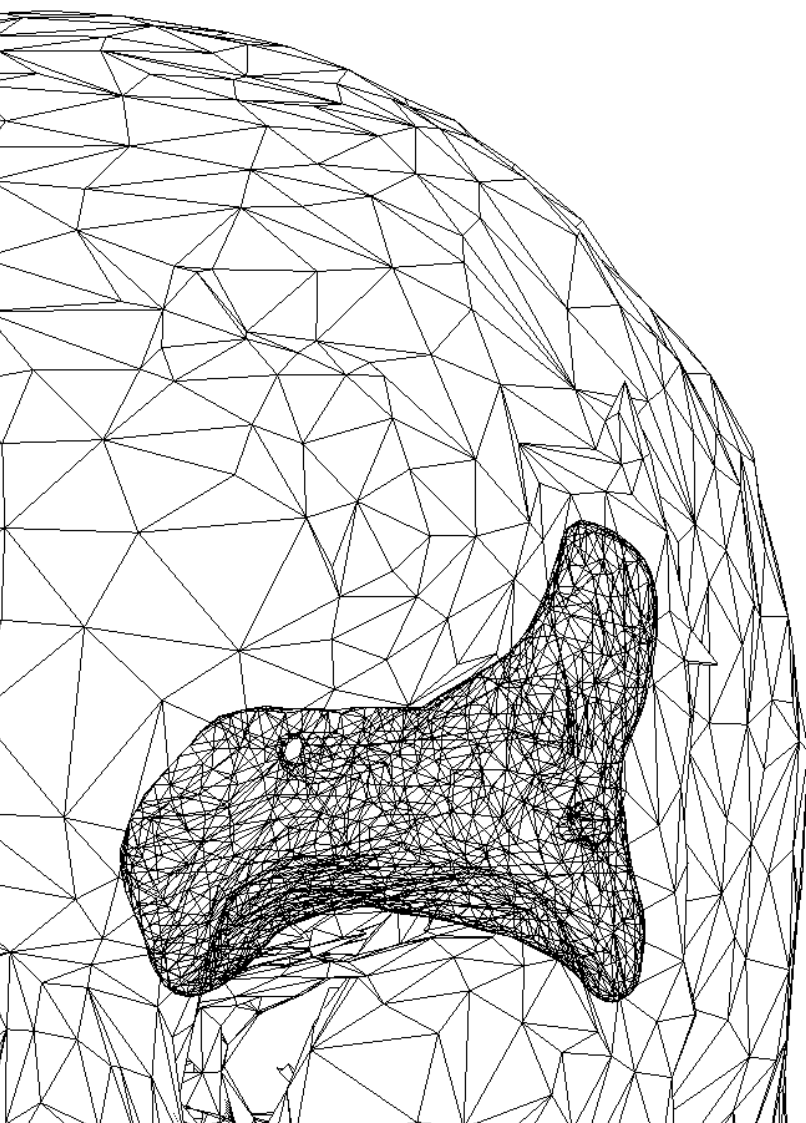


Customy Vision

Software Installation Instructions

Version CV-SII-2022.01-EN

Release date 2022.06.03



Manufacturer Contact Details

Customy Vision 1.1.0 Software manufactured in June 2022 by



Smart Labs Sp. z o.o.
ul. Metalowców 13
41-500 Chorzów, Poland
email: contact@customy.eu
www.customy.eu

Table of Contents

1. Introduction.....	3
2. System Requirements.....	3
3. Installation on macOS operating system	3
3.1. Installation process.....	3
3.2. Verification of the installation process	8
4. Installation on the Windows operating system.....	9
4.1. Installation process.....	9
4.2. Verification of the installation process	13
5. Additional information.....	15

1. Introduction

In this Software Installation Instructions has been included installation scenarios for Customy Vision software on macOS and Windows operating systems.

2. System Requirements

Before installing, verify that the system meets the hardware and operating system requirements. The system requirements are included in the Customy Vision Instructions for Use (IFU).

3. Installation on macOS operating system

3.1. Installation process

Follow these steps if Customy Vision is to be run on macOS operating system:

1. Download the setup file

To get started, go to the given installation link and download the Customy Vision Installer. By default, the installation file will be saved on your computer in the *.dmg* format in the Downloads folder under *CustomyVisionSetup.dmg* filename. To start the installation, open the *CustomyVisionSetup.dmg* file via Right-click the file and click *Open*.

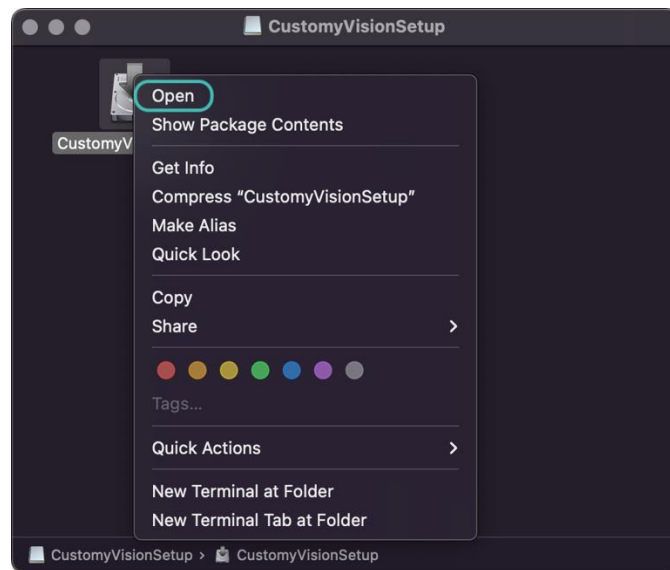


Figure 1. Right-click options of the installation file

2. Handle the security warning

Depending on your macOS security settings, you may get a security warning, as shown below in Figure 2. If the window appears, click *Open* to continue the installation process.

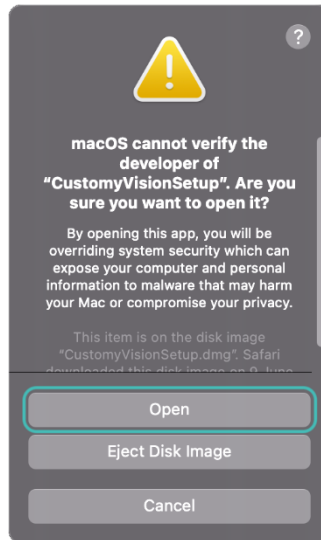


Figure 2. Security warning – macOS

3. Installation wizard

The Customy Vision Installer Setup should automatically start. Follow the instructions to install the software:

Step 1: Setup – Customy Vision

When the Customy Vision Installer Setup window opens, as shown below in Figure 3, click *Continue*.

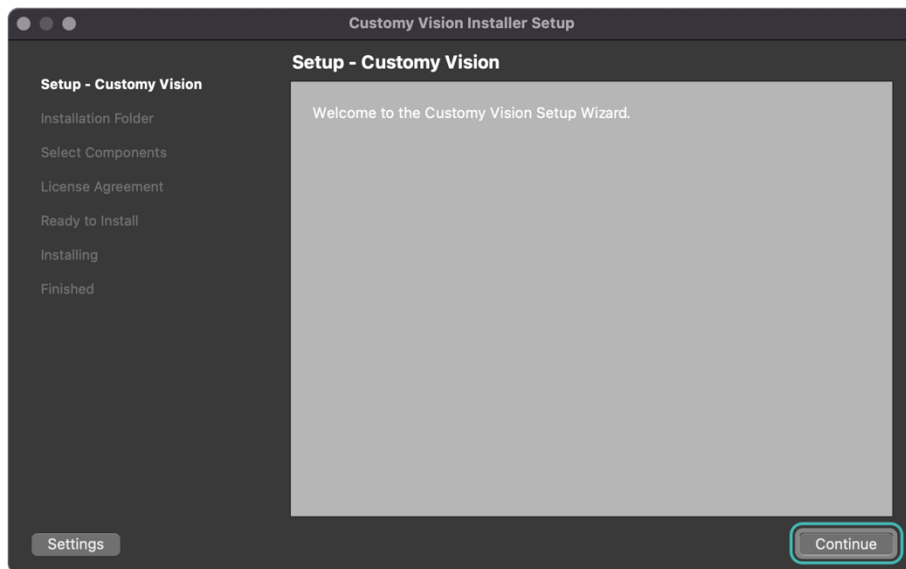


Figure 3. Step 1: Setup – Customy Vision – macOS

Step 2: Installation folder

In this step, you can specify where Customy Vision should be installed by clicking *Browse* button or continue with default settings and save the application in location `/Users/<user name>/Applications/Customy`, and then click *Continue*.

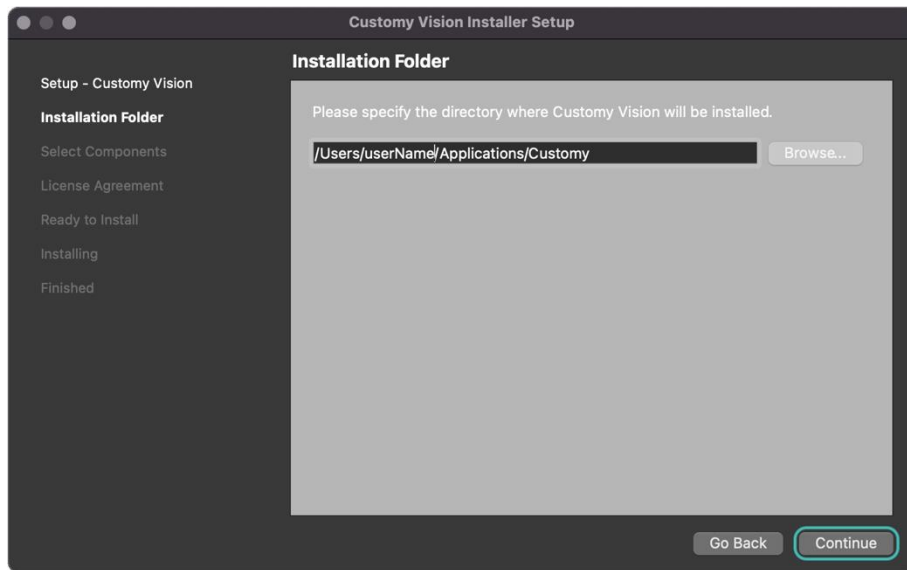


Figure 4. Step 2: Installation Folder – macOS

Step 3: Select Components

The next step shows all components which will be installed. Click *Continue* to proceed to the next step.

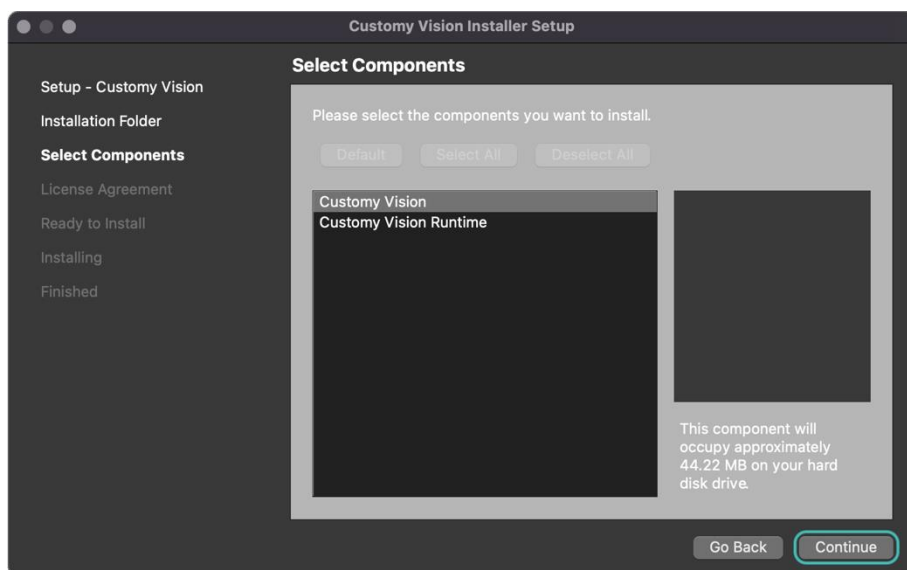


Figure 5. Step 3: Select Components – macOS

Step 4: License agreement

Read the *End-User Software License Agreement* carefully, and to proceed to the next step, accept the Agreement by selecting *I accept the license* and clicking *Continue*.

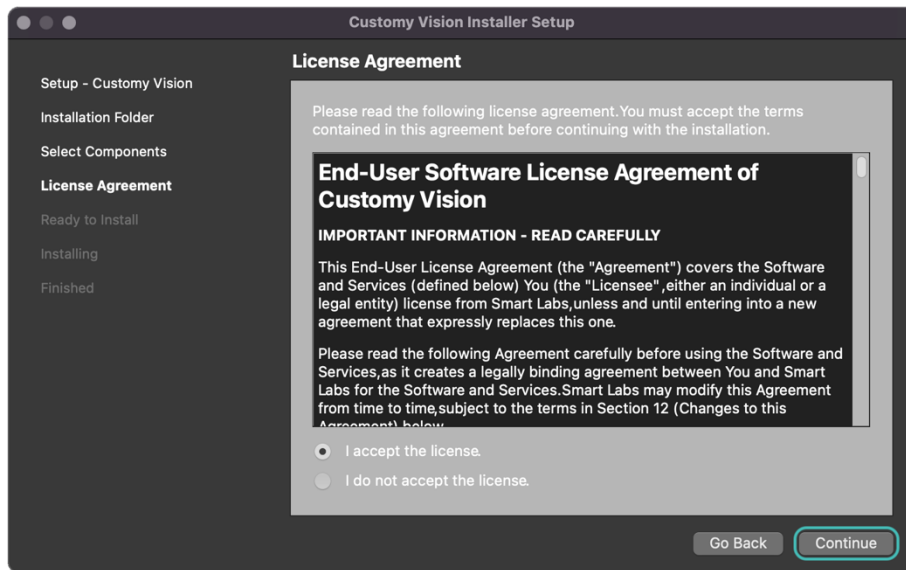


Figure 6. Step 4: License Agreement – macOS

Step 5: Ready to Install

In this step, you get the message shown in Figure 7 that the software is ready for installation and how much memory the installation will take. To confirm and start the installation, click *Install*.

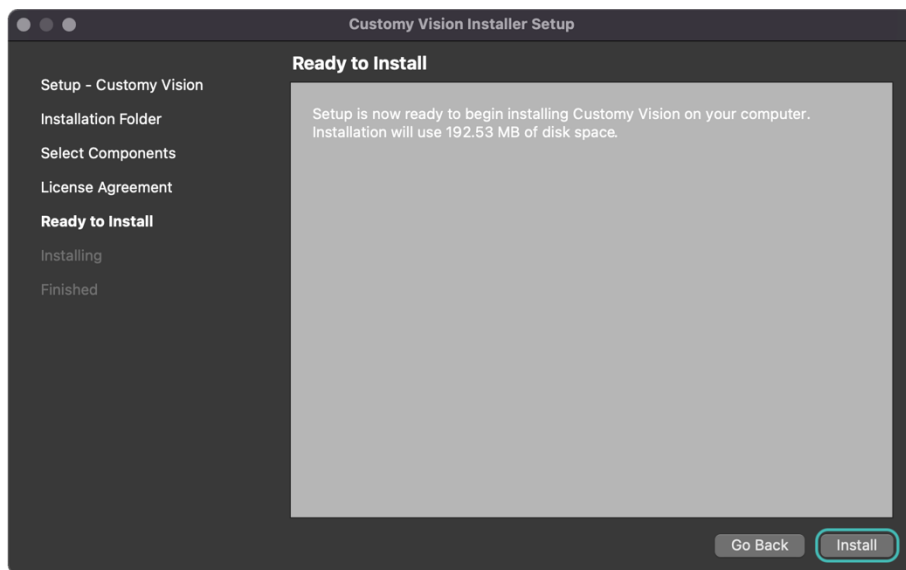


Figure 7. Step 5: Ready to Install – macOS

Step 6: Installing

The installation should start automatically after clicking *Install* in the previous step. The duration of the installation process depends on your computer.

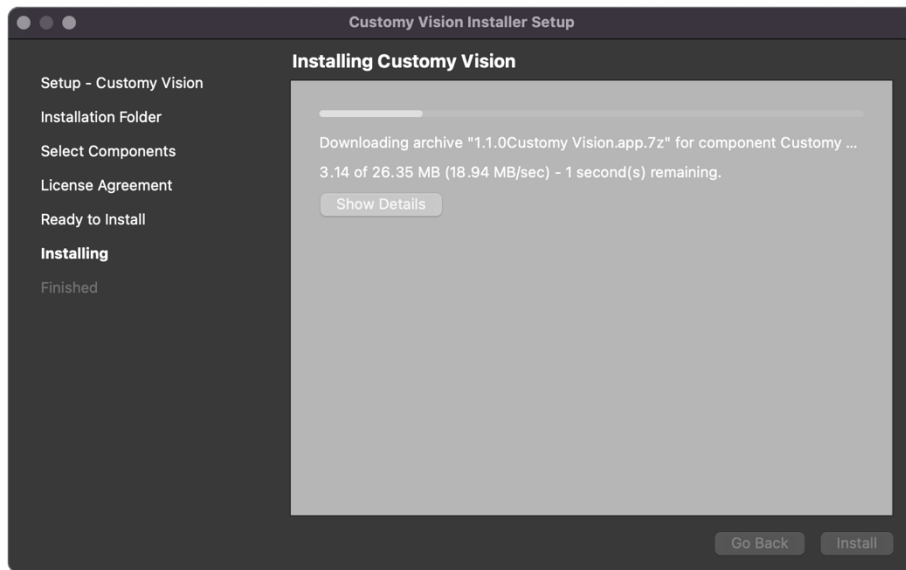


Figure 8. Step 6: Installing – macOS

Step 7: Finished

Once the installation is done, you will be informed that the installation process was successful.

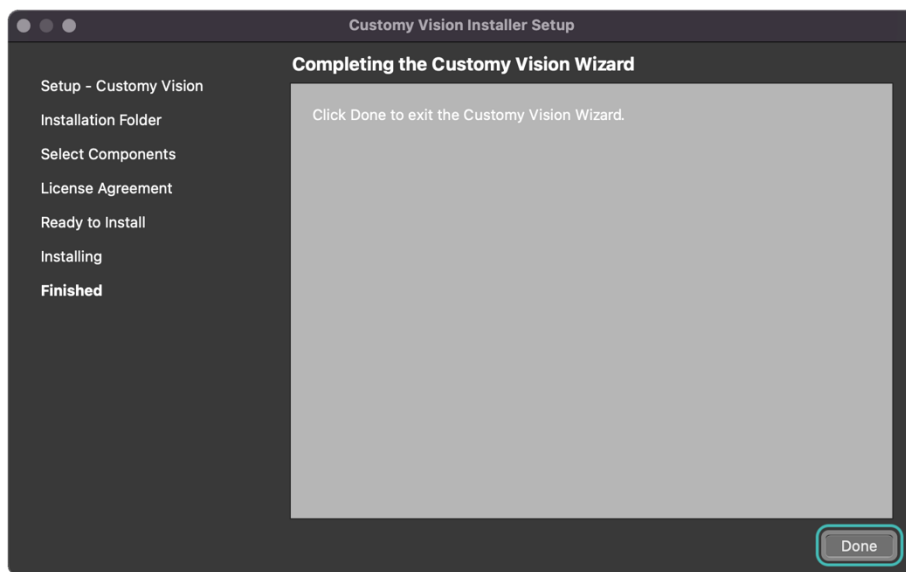


Figure 9. Step 7: Finished – macOS

To complete the installation, click *Done*. Then the installer will be closed.

3.2. Verification of the installation process

1. Installation success

The installation process ended successfully when:

- the Customy Vision Installer Wizard finished all steps
- the Customy Vision folder should be placed in the selected directory and in Launchpad,
- after running the Customy Vision, the application window (as shown below in Figure 10) should appear.

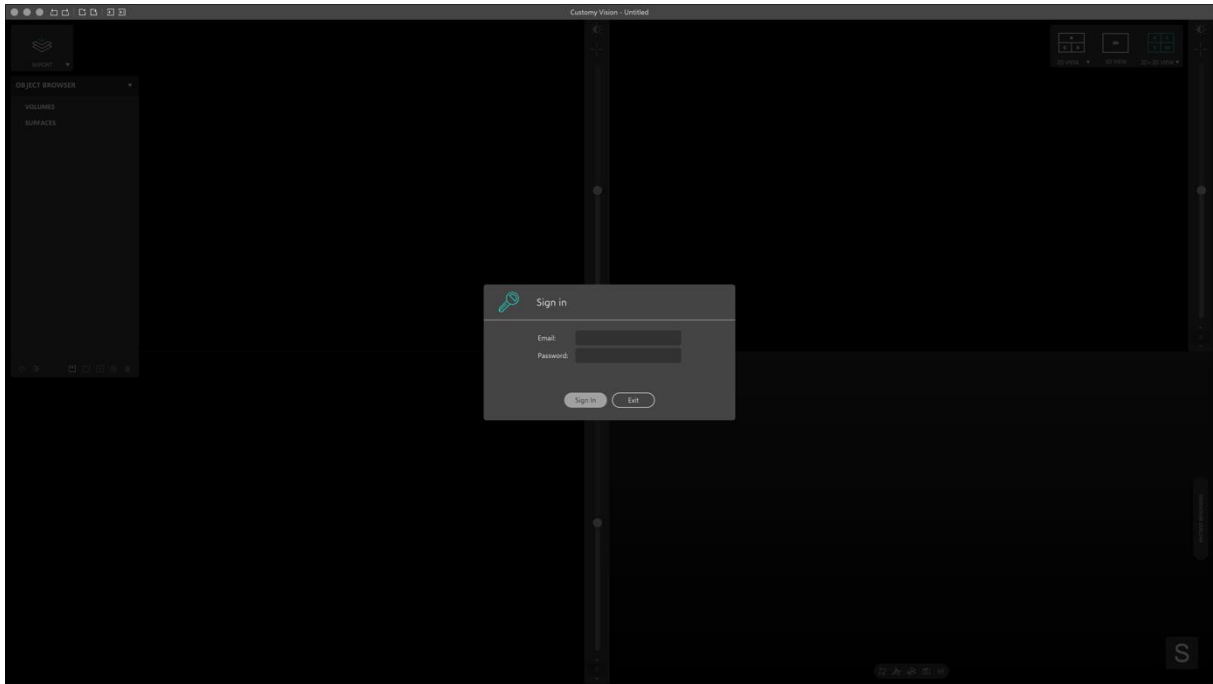


Figure 10. Customy Vision window – macOS

2. Installation failure

Possible Installation failure can be associated with security rules held by the device antivirus software, the user's limited access to the device disc's partitions, or insufficient memory for the installation. Every case has its system dialog popup informing the user what problem is causing interruption of the installation. To resolve them, follow the information included in the dialog window.

For in-depth information and customer service, contact us at support@customy.eu

4. Installation on the Windows operating system

4.1. Installation process

Follow these steps if Customy Vision is to be run on Windows operating system:

1. Download the setup file

To get started, go to the given installation link and download the Customy Vision. By default, the installation file will be saved on your computer in the .exe format in the Downloads folder under CustomyVisionSetup.exe filename. To start the installation, open the Customy Vision Setup.exe file.

2. Handle the security warning

Depending on your Windows security settings, you may get a security warning, as shown below in Figure 11.



Figure 11. Security warning 1 – Windows

If the window appears, click *More info* and then you should get more information, click *Run anyway* to continue the installation process.

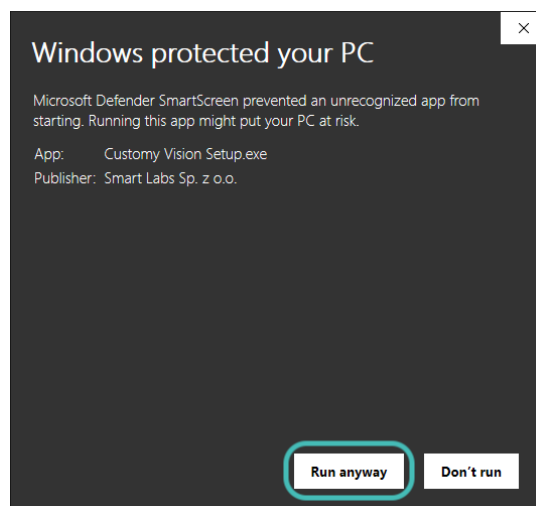


Figure 12. Security warning 2 – Windows

3. Installation wizard

The Customy Vision Installer Setup should automatically start. Follow the instructions to install the software:

Step 1: Setup – Customy Vision

When the Customy Vision Installer Setup window opens, as shown below in Figure 13, click *Next*.

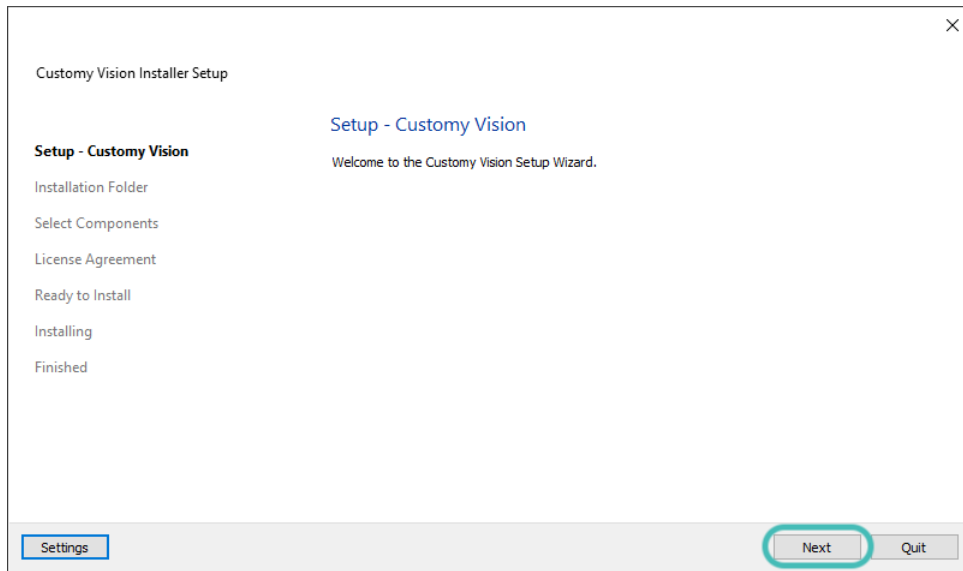


Figure 13. Step 1: Setup – Customy Vision – Windows

Step 2: Installation folder

In this step, you can specify where Customy Vision should be installed by clicking *Browse* button or continue with default settings and save the application in location `\Users\<user name>\Applications\Customy`, and then click *Continue*.

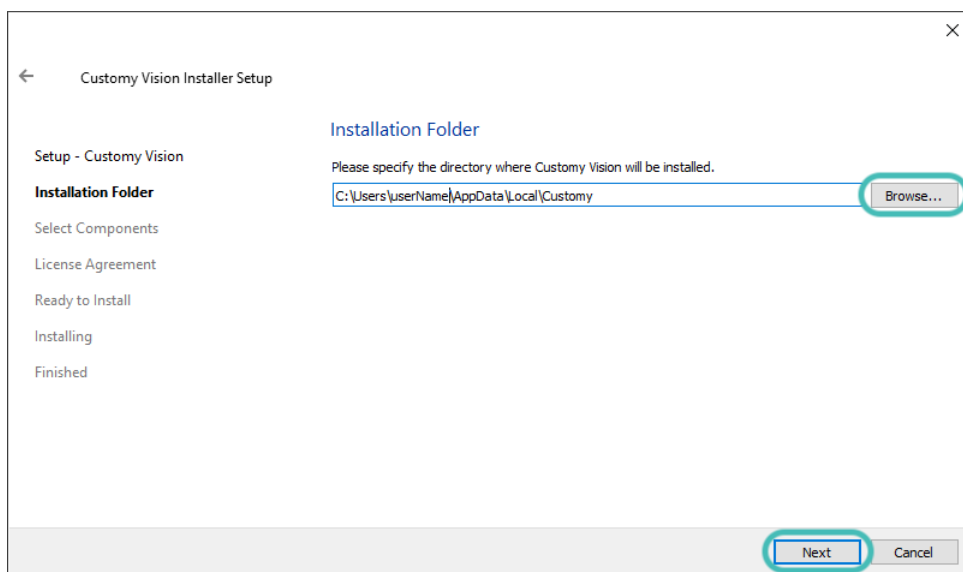


Figure 14. Step 2: Installation Folder – Windows

Step 3: Select Components

The next step shows all components which will be installed, click *Continue* to proceed to the next step.

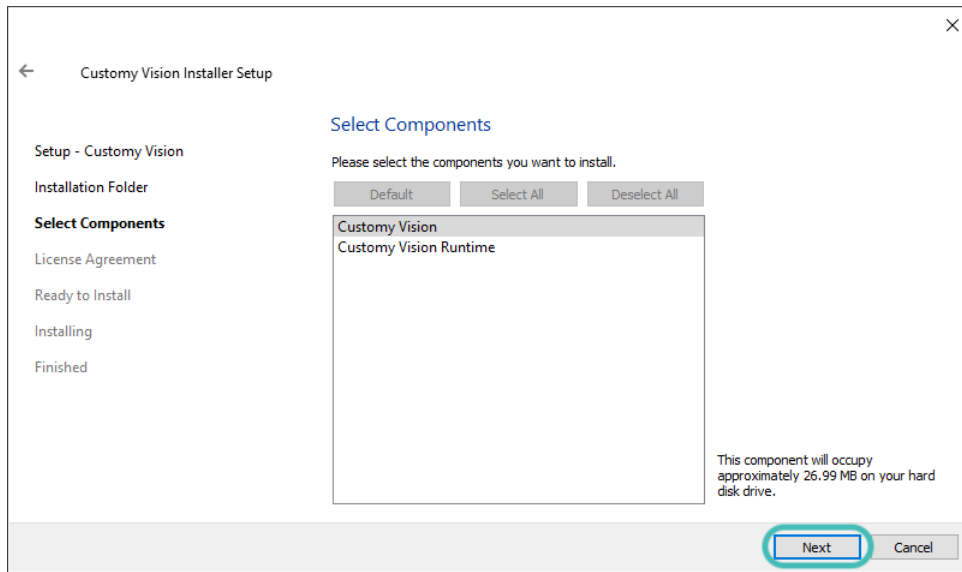


Figure 15. Step 3: Select Components – Windows

Step 4: License Agreement

Read the *End-User Software License Agreement* carefully, and to accept the License Agreement selecting *I accept the license* and click *Continue*.

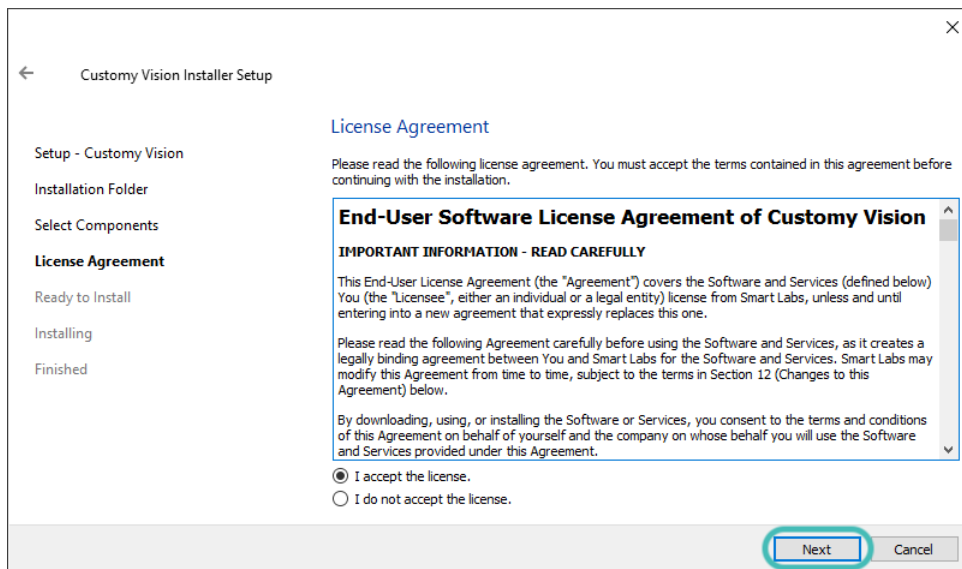


Figure 16. Step 4: License Agreement – Windows

Step 5: Ready to Install

In this step, you receive a message that the software is ready to be installed. To start the installation, click *Install*.

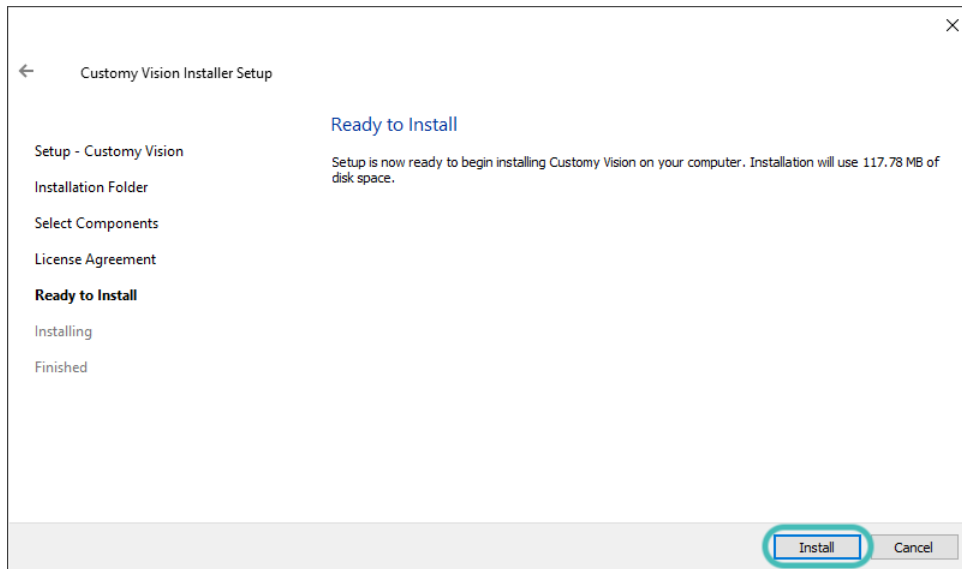


Figure 17. Step 5: Ready to Install – Windows

Step 6: Installing

The installation should start automatically. The duration of the installation process depends on your computer.

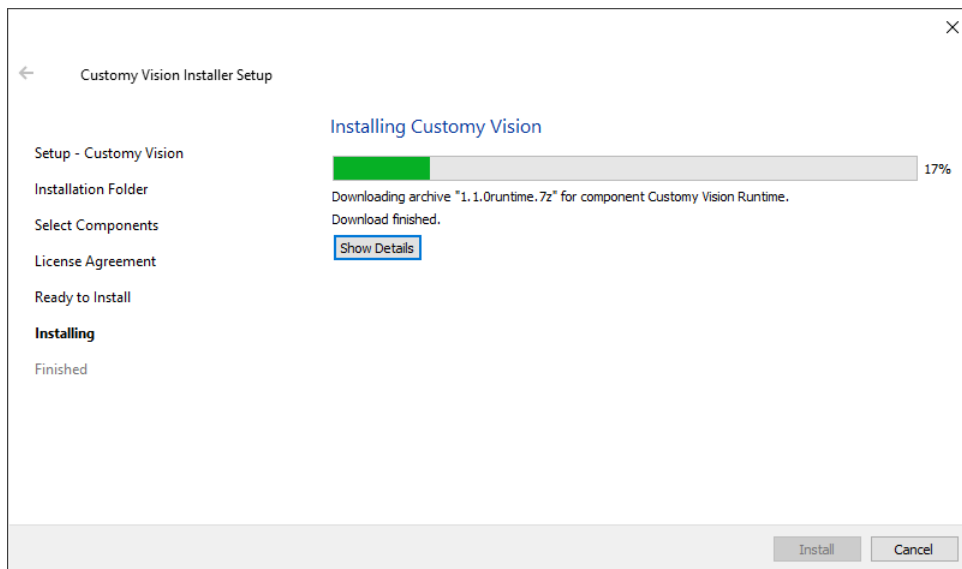


Figure 18. Step 6: Installing – Windows

Step 7: Finished

Once the installation is done, you will be informed that the installation process was successful.

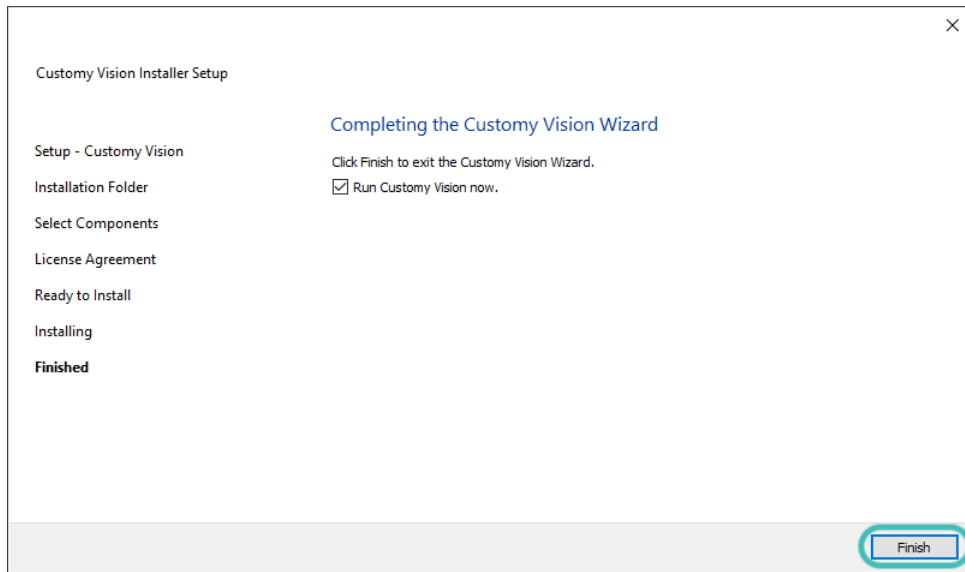


Figure 19. Step 7: Finished – Windows.

To complete the installation, click *Done*. Then the installer will be closed.

4.2. Verification of the installation process

1. Installation success

Verification of the success of the installation:

- the Customy Vision Installer Wizard finished all steps
- the Customy Vision folder should be placed in the selected directory
- after running the Customy Vision, the application window (as shown below in Figure 20) should appear.

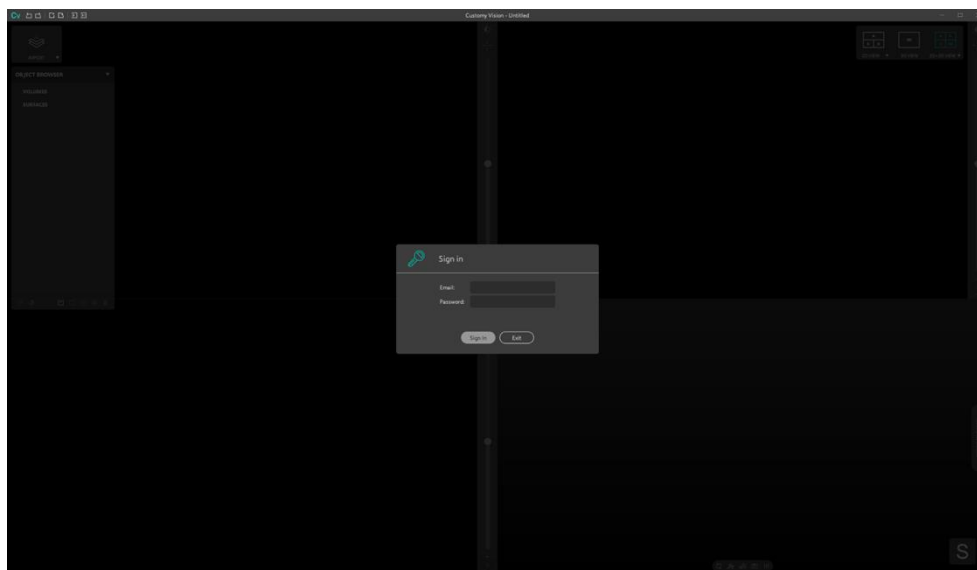


Figure 20. Customy Vision window – Windows

2. Installation failure

Possible Installation failure can be associated with security rules held by the device antivirus software, the user's limited access to the device disc's partitions, or insufficient memory for the installation. Every case has its system dialog popup informing the user what problem is causing interruption of the installation. To resolve them, follow the information included in the dialog window.

For in-depth information and customer service, contact us at support@customy.eu.

5. Additional information

Software Installation Instruction and Instructions for Use (IFU) are available in electronic version (format PDF¹) and can be downloaded at www.customy.eu.

Customy Vision Software users can obtain a free paper copy of this document by emailing support@customy.eu. The paper version will be provided within 7 working days.



The Customy Vision Software is not intended to process mammography imaging due to the imaging method of this study.



The precautions required by the manufacturer are described in detail in the User Manual.



Customy Vision Software can be used after the detailed reading of the Instructions for Use and User Software Manual of Customy Vision.



The technical requirements for the Customy Vision Software are described in the User Manual and Instructions for Use (IFU).

¹ Reading PDF files is provided by Adobe Acrobat Reader software